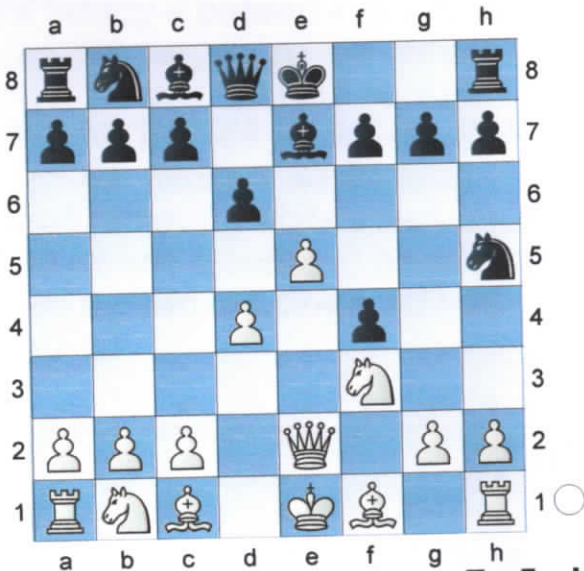


□ Pechec,J  
 ■ Amin Tabatabaev,M  
 Tata Steel 2  
 [Nick]

C34  
 2023

1.e2-e4 e7-e5 2.f2-f4 e5xf4 3.Ng1-f3  
 Ng8-f6 4.e4-e5 Nf6-h5 5.d2-d4  
 d7-d6 6.Qd1-e2 Bf8-e7?



a blunder which costs a piece 7.e5xd6  
 Qd8xd6 8.Qe2-b5+ Nb8-c6  
 9.Qb5xh5 Nc6xd4 10.Bf1-d3?!

[ 10.Nf3xd4 was necessary. White seems to be under the impression that anything reasonable will win Qd6xd4 11.Nb1-c3 g7-g5 12.Bc1-d2 Bc8-e6 13.0-0-0 is a sample way to get some development and safeguard the king ]

10...g7-g6 forcing th white queen away from the defence of the knight  
 11.Qh5-a5 Nd4xf3+ 12.g2xf3  
 now the white king is exposed 12...0-0 sensibly tucking the king away from any future annoying checks before trying to esxploit the ope position of the white king 13.Nb1-c3 Qd6-e6+  
 14.Nc3-e2 Be7-h4+ 15.Ke1-d1 from now on the white king remains a traget and the white pieces lack co-ordination 15...Qe6-h3 black must

continually operate with threats to prevent white from consolidating  
 16.Bc1xf4 Qh3xf3 17.Kd1-d2 Bc8-h3 developing and covering f1 18.Bf4-g3 b7-b6 forcing the white queen from guarding the g5 square 19.Qa5-b5 a7-a6 20.Qb5-c4 Bh4-g5+ 21.Bg3-f4 Bg5-f6 it is black's interest to keep pieces on the board. The bishop move also attacks the white b pawn  
 22.Rh1-g1

[ 22.c2-c3 Rf8-d8 23.Kd2-c2 Rd8xd3 24.Qc4xd3 Bh3-f5 ]

22...Rf8-e8 with no direct threat available black simply btings another piece into the action 23.Ra1-e1

[ 23.Rg1-g3 Qf3-h5 24.Bf4xc7 Bf6-g5+ 25.Rg3xg5 Qh5xg5+ 26.Qc4-f4 keeps white in the game with perhaps a small advantage ]

23...b6-b5 24.Qc4xc7 black is happy to lose the c pawn as now the c file is opened for the rook on a8. At this stage piece activity is more important than material

[ 24.Qc4-b3 Re8xe2+ 25.Re1xe2 Qf3xf4+ is a typical way for white to go wrong ]

24...Ra8-c8 25.Qc7-d6 Re8-e6  
 26.Rg1-g3

[ 26.Qd6-d7 Re6xe2+ ]  
 [ 26.Qd6-b4 a6-a5 27.Qb4xa5 Re6xe2+ 28.Re1xe2 Qf3xf4+ ]

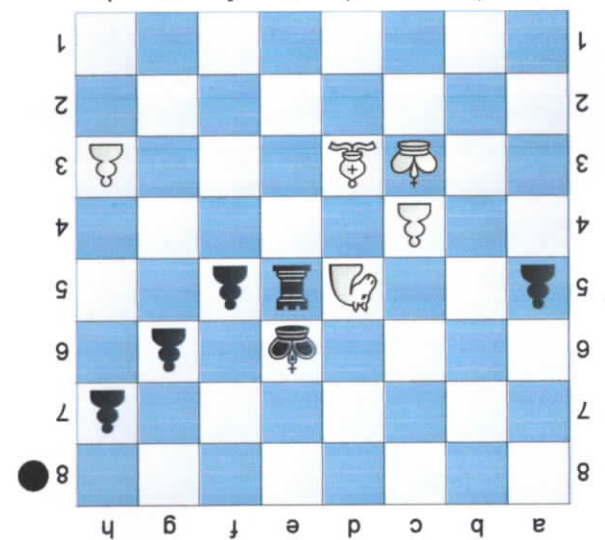
26...Qf3-f2 27.Bf4-e3 now black ha a small combination to win back some material and leave white's pawns vulnerable 27...Qf2xe1+

[ 27...Re6xe3 28.Rg3xe3 Bf6-g5 29.Qd6-g3 Bg5xe3+ 30.Qg3xe3 Qf2xe3+ 31.Kd2xe3 ]

28.Kd2xe1 Re6xd6 29.Rg3xh3 Bf6xb2 white has avoided getting

mated an has 2 pieces for a rook, but black has 2 extra pawns and retains winning chances 30.Rh3-h4 f7-f5 advancing the passed pawn and

preparing to include the king in the action 31.a2-a4 Bb2-f6 32.Rh4-b4 Bf6-e7 threatening... Rxd3 33.Rb4-b1 b5xa4 34.Rb1-a1 a4-a3 35.Be3-c1 [ 35.Ra1xa3 Rf6-e6 wins more material ]  
 35...Rd6-d5 36.Bc1xa3 Rd5-a5 37.Ba3-b2 Ra5xa1+ 38.Bb2xa1 a6-a5 the position has clarified with black having a passed pawn. White's pieces lack targets so are reduced to trying to defend 39.Ne2-f4 Kg8-f7 40.Nf4-d5 Be7-d6 41.h2-h3 Rc8-e8+ 42.Ke1-d2 Bd6-e5 43.Ba1xe5 Rb8xe5 removing white's dark square bishop makes it easier to advance the passed a pawn 44.c2-c4 Kf7-e6 45.Kd2-c3



now black has a winning combination 45...Rexd5 white resigned here

46.c4xd5+ Ke6xd5 47.Bd3-c2 [ 47.Bd3-c4+ Kd5-e4 48.Bc4-g8 h7-h6 49.Bg8-h7 g6-g5 50.Bh7-g6 Ke4-f4 51.Kc3-b3 g5-g4 52.h3xg4 f5xg4 53.Bg6-e8 h6-h5 54.Be8xh5 ] 56.Ka4xa5 g4-g3 ) 54...g4-g3 ] 47...Kd5-e5 48.Kc3-d2 Ke5-f4 49.Kd2-e2 Kf4-g3 50.h3-h4 Kg3xh4 0-1