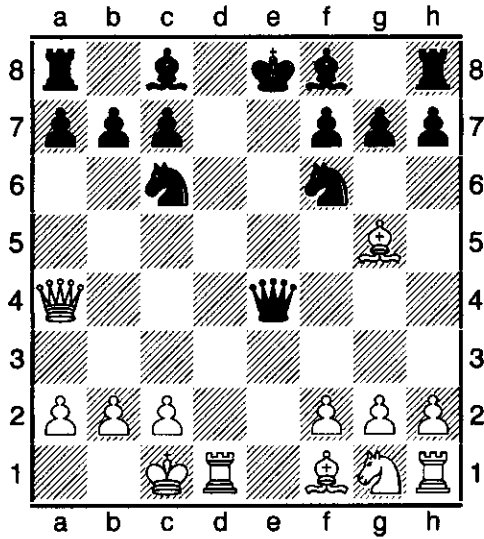
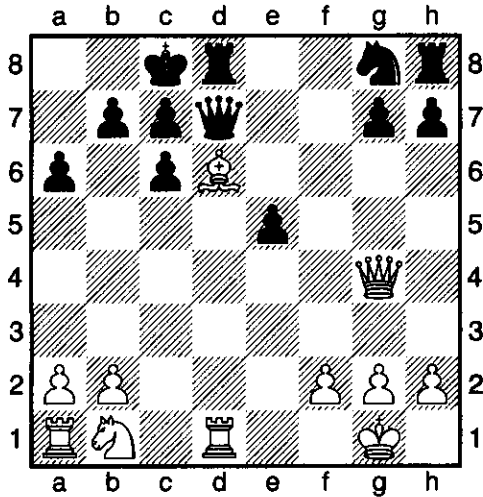


Pinto win 2



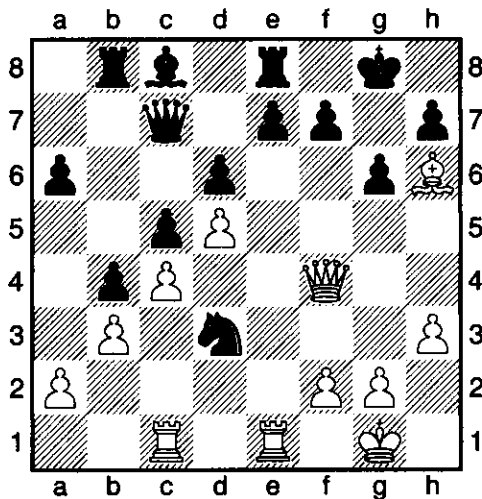
1. **Rd1-d8+** and the knight on c6 cannot capture because it is pinned! The black king is forced to move so that the knight on f6 is now pinned and cannot defend the black queen

1... **Ke8xd8** 2. **Qa4xe4+-**



1. **Bd6-e7** and the bishop cannot be captured because the black queen is pinned. Now the rook on d1 is attacking the black queen

1... **Qd7xg4** 2. **Rd1xd8#**



1. **Qf4-f6** threatens mate on g7 and takes advantage of the pin on the e file

1... **e7xf6** [1... **Nd3xe1** 2. **Qf6-g7#**]

2. **Re1xe8#**