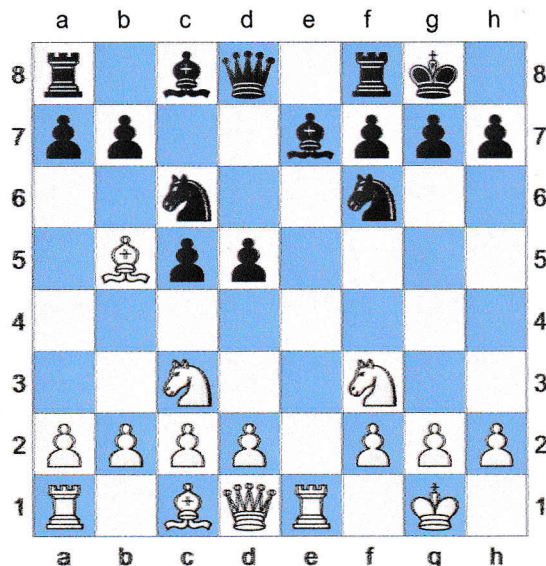
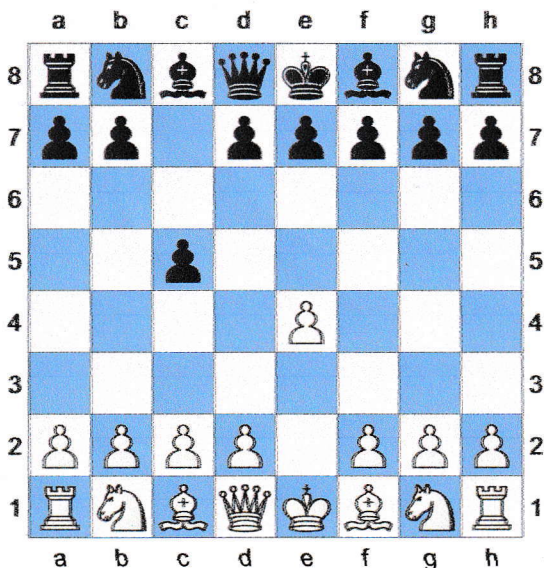


B30

basic Sicilian 1
[Nixon, Graham]

1.e2-e4 c7-c5



Black tries to control the important central square d4 **2.Bf1-c4** although this move looks normal it is not very good because black will soon be able to use its exposed position to control even more of the centre

2...e7-e6 3.Ng1-f3 Nb8-c6 developing towards the centre **4.0-0 Ng8-f6** more development **5.Nb1-c3** [5.e4-e5 Nf6-g4 attacking the e pawn 6.Rf1-e1 Qd8-c7 and again 7.Qd1-e2 d7-d6 8.e5xd6 Bf8xd6 not only developing but attacking h2]

5...d7-d5 attacking the bishop to gain control of another central square

6.e4xd5 e6xd5 7.Rf1-e1+ Bf8-e7 8.Bc4-b5 0-0

(Diagram)

not only safeguarding the king but also taking the lead in the race to develop the pieces